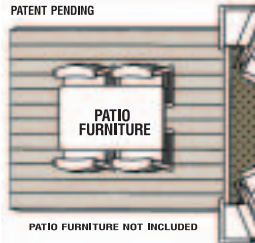
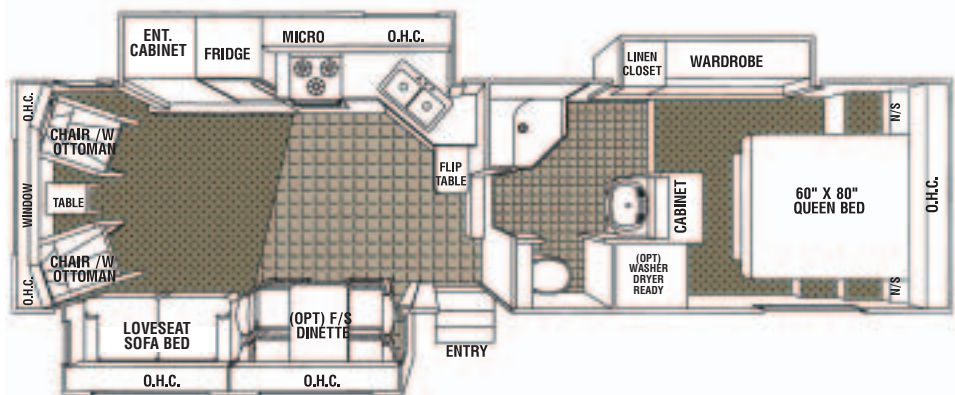


**NEW**OPTIONAL SCREENED REAR DECK PATIO  
PATENT PENDING

PATIO FURNITURE NOT INCLUDED

**Titanium**<sup>®</sup>  
GLENDALE, ILL.**29E34TS****FIFTH WHEEL  
2005 MODEL YEAR**

OVERALL LENGTH	LENGTH-PIN TO BUMPER	G.V.W.R	DRY PIN WEIGHT	DRY WEIGHT	OVERALL HEIGHT	MAIN BODY WIDTH
34'-11"	29'-9"	12,226 lbs	1,900 lbs	9,690 lbs	12'-8"	96"

**CONSTRUCTION**

**SIDEWALLS:** Vacuum bonded ultra smooth Lamilux fiberglass siding. 1-1/2" light weight Aluminum Perimeter sidewall framing, and 1-1/2" rigid foam insulation.

**ROOF:** Seamless rubber roof membrane is bonded to 3/8" plywood decking. Full 5-1/2" tapered aluminum truss framing. Thick fiberglass batt insulation. Cathedral ceilings in the bedroom.

**FLOOR:** Laminated composite floor structure includes 3" foam insulation panel bonded between plywood panels and perimeter framing. Darco polyethylene moisture barrier between chassis underbelly. Seam guard under vinyl floor coverings.

**CHASSIS:** 11" combination Z channel/steel tube frame construction, axle shocks at all wheels, Goodyear ST235/80R16 "D" radial tires, venting wheel rims 12"x2" electric brakes, under slung spare tire and rim, snap release pins on powered front landing gear, power front landing gear includes a safety shut off switch, 2 stabilizer jacks, 72 degree adjustable pin box.

**SLIDEOUT SPECIFICATIONS:** Low maintenance powerful rack and gear 12V direct drive motor system, flush floor design, gearbox release lever included for system manual override.

**INTERIOR CABINET DOORS:** Combination of Raised panel & cathedral style mirrored Oak cabinet doors. Easy-Glide metal roller system on all drawers.

**WINDOWS:** Radius corner, tinted SAFETY glass.

**ENTRANCE DOOR:** 30" wide radius corner combination entrance door with screen and deadbolt lock, easy fold-away 24" triple rise entry steps, fold away assist handle on entry door, porch light.

**APPLIANCES**

**REFRIGERATOR:** Dometic 8 cubic ft double door, 2 way gas/110v.

**RANGE:** Wedgewood High Output 21" 3 burner, piezo ignitor, includes a bi-fold burner cover.

**FURNACE:** Atwood 2 stage Excalibur furnace 34,000 BTU ducted in floor heat system.

**MICROWAVE OVEN:** Dometic 24" 1.3 cubic ft with turntable and

built in range hood, light and exhaust fan.

**AIR CONDITIONER:** Dometic Briskair 13,500 BTU thermal insulated ducted in ceiling cool air system.

**ENTERTAINMENT**

**STEREO:** DVD/CD tuner 5 speaker Surround Sound. (Mandatory Super Pack)

**BEDROOM STEREO:** Stereo 12V CD/Clock Radio with remote. (Mandatory Super Pack)

**TV ANTENNA:** Winegard RV antenna with booster.

**TV HOOKUP:** Coax cable hookup in bedroom and living area.

**TELEPHONE JACK:** Standard equipment.

**SATELLITE HOOKUP:** Pre-wired for quick dish connection to the RV.

**AWNING**

**A&E 13' AWNING:** Pewter/White. Awning features patented rugged steel roller tube and heavy duty torsion spring 8' extension.

**PLUMBING & ELECTRICAL**

Sealand Traveler Lite foot pedal flush china toilet with hand spray (Mandatory Option), corner shower and surround, single lever Brushed Nickel faucet in kitchen with sprayer, large double brushed nickel sinks, and sink cover included, brushed nickel single lever tap in bathroom, water heater by pass kit, Water Filtration System.

**WATER HEATER:** Atwood XT advance water heater system featuring Exothermal Technology 10 Gallon gas/electric (Direct Spark Ignition) that provides the equivalent to 16 gallons of hot water (Mandatory Option).

**HOLDING TANKS:** Holding tanks are enclosed, insulated and heated. Garden Style non-freeze drain tap on fresh water tank, sewage tank flush system.

**HOLDING TANK CAPACITIES:**

**FRESH:** 48 gallon. **GREY:** 49 gallon. **SEWAGE:** 49 gallon.

**ELECTRICAL CONVERTER:** Progressive Dynamics 9100 series converter with Charge Wizard.

**HOOKUP:** 30 AMP.

**STANDARD FEATURES**

Fiberglass front and back end caps, roof rack and ladder, oak edge counter tops, exterior rinse shower, venetian blinds, 2 x 30 lb propane bottles with auto change over regulator, systems monitor panel, color coordinated ABS lower sidewall skirting, smoke detector, huge under bed storage cavity, 60"x80" queen bed, 2 Chairs w/Ottoman, decorative corner blocks on the interior slideouts, 400W Inverter.

**OPTIONAL EQUIPMENT**

Free standing Oak dinette with storage in place of booth style dinette, Wall-A-way recliner, Loveseat Sofa Bed (Mandatory Option), day/night shades, thermopane windows, storm windows, aluminum rims, exterior security lights, dual front landing gear (Mandatory Option), porcelain toilet (Mandatory Option), electric fireplace, washer dryer ready, generator ready connection, skylight in bathroom, 27" Stereo TV, rear deck patio, 1,000W Inverter/Converter.

**OPTIONAL  
FEATURE PACKAGE UPGRADES**

**INTERIOR PACKAGE:** Fluorescent ceiling lights, day/night shades, Oak galley area flooring.

**COMFORT PACKAGE:** 15,000 BTU air conditioner upgrade, Fantastic powered roof vent in bedroom, central vacuum, paddle fan.

**MANDATORY SUPER PACK  
FEATURE UPGRADES**

Never Lube Axles, Bedroom 12V CD/Clock Radio with remote, DVD/Tuner 5 Speaker Surround Sound, Bi-Fold Burner Cover, Solar Panel Trickle Charger on Air Conditioner, Down Draft Cool Air Diverter, Brushed Nickel Single Lever Kitchen Tap Set, Exterior Quick Connect for BBQ, New Exterior Graphics Package, Mirrored Doors in Bedroom, Cathedral Mirrored OHC's in Living area, Attic Vents, Baseboard and Oak ceiling Molding, OHC in Bedroom, Stainless Steel Look Microwave, Bullet Style Lighting included on Rear OHC's in living area, bedroom, and Sofa Slideout area.